

# PACKING MACHINES



# BULLET FAST

*Perpetual*



**The packing master for small and medium-sized enterprises.**

While developing the Perpetual®, we chose to use a fully automatic, low-cost, economical and semi-automatic machine for users. The more you win, the more you earns!

# PACKING MACHINES

You can pack with different weights from 25 kg to 50 kg. Thanks to the touch control panel, you can view all functions on one screen, access information about product weight and quantity and act if it is necessary.



PERPETUAL® packaging concept begins with the transfer of materials prepared by a mixer onto a band. Materials delivered to the dispensing system via the band are transferred from here into bags. After the air is removed from the package, the movement of material in the system ends by pressing and closing the top of the bag. Since the pressing process is the main factor in the life of the packaged product, the pressing process will be ideal thanks to the four powerful pneumatic piston.



# Perpetual

Maize silage, beet pulp, vetch silage, coarse fodder, pellet feed, potato pulp, fruit pulp, olive pulp, grape pulp, barley, wheat, manure and industrial waste are in the list of things which can be packed with this machine.



It is quite easy to operate the machine with SPACEBULL PLC control panel and extensive interface. You can control all the functions of the machine from a touch operated monitor and you can reach the information such as the weight, number and etc. of the product.

# PACKING MACHINES

Perpetual GO is the packaging master. With the GO series, bags from 20kg to 60kg can be packed and the touchscreen control panel allows you to view all functions on one screen. This way, you can easily access information such as weight and product number. The Perpetual GO is designed to make things easier for you with its ability to pack nine tons per hour.

With Perpetual GO® you can easily pack materials such as maize silage, beet pulp, vetch silage, coarse fodder, pellet feed, potato pulp, fruit pulp, olive pulp, grape pulp, barley, wheat, manure and industrial waste.



## STRONG CHASSIS FRAME

Considering PERPETUAL® operating conditions, we have presented a chassis design that will not let the user down.

## REMOTE CONTROL

o be able to help with potential problems PERPETUAL®'s SPACE-BULL software has an integrated remote connection feature. Thanks to this system, if a problem occurs and user can not fix it Celikel® technical assistance crew can remotely connect and rectify this issue.

## ADJUSTABLE PACKET WEIGHT

Thanks to the PLC, which allows the digital display and scale system on the machine work together, you can easily choose the packing capacity by selecting one of the options from 20 kg to 60 kg on the digital screen. You will get perfect packages with a maximum error of 0.2%.

## ■ AUTOMATIC CONVEYOR

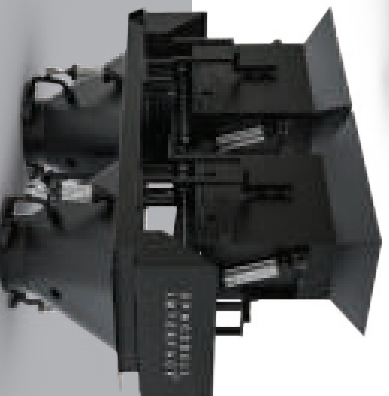
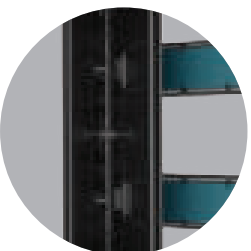
PERPETUAL's intake unit is controlled by SPACEBULL automatic system and the system automatically executes the carrying of materials which will be packed.

## ■ MIXING BUNKER

When there is a demand for more than one material to be packed PERPETUAL's mixing bunker mixes these materials homogeneously to make sure you get a Standard ration in each packet.

## ■ MOBILITY & GO

Thanks to its mobile structure it may save you transportation costs and you can easily move your machine to a place with electricity and start working easily.



## ■ DOSING SYSTEM

To be able to provide the sensitivity in dosing, Perpetual GO® Series's dosing system has programmable speed setting. You can achieve the desired sensitivity easily by adjusting general and precise speed settings for different weights.

## ■ DOUBLE STATION

Two different station independent from one another. Two independent packing machine in one body, each can work with high performance.

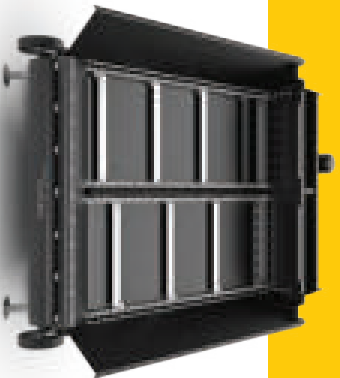
## ■ PRESS SYSTEM

Packets filled with materials are brought to vacuum station, after the air inside the packets is vacuumed the packets are pressed and sealed. The difference in Perpetual® packing system from its competitors is that thanks to its adjustable band height all the packets are packed rigidly and consistently.

# PACKING MACHINES

There is no need to worry about packing with Perpetual Ultimate®. You can do packing from 25 kg to 50kg with Ultimate® model. Thanks to the touch operated control panel you can observe all the functions from single monitor and reach informations such as weight and number of the product. Perpetual Ultimate® is faster than ever with a packing capacity of 10-15 tons an hour.

With Perpetual Ultimate® you can easily pack materials such as maize silage, beet pulp, vetch silage, coarse fodder, pellet feed, potato pulp, fruit pulp, olive pulp, grape pulp, barley, wheat, manure and industrial waste



## ■ TIPPER INSTALLED BUNKER

Thanks to high power of intake conveyor engines, you can load high weight loading to Perpetual®.

## ■ DOUBLE STATIONS AND CAPACITY INCREASE

Two different station independent from one another. Two independent packing machine in one body, each can work with high performance.

## ■ REMOTE CONTROL

To be able to help with potential problems PERPETUAL®'s SPACEBULL software has an integrated a remote connection feature. Thanks to this system, if a problem occurs and the user can not fix it Çelike!® technical assistance crew can remotely connect and rectify.



## ■ MOBILE STRUCTURE

You can cut spendings thanks to its mobile structure and move your machine and start working in a place where there is electricity.

Mobile single and double stationed model is equipped with Standard hardware with low maintenance cost, easy to find spare parts and a long lifespan. Besides single and double stations there are embedded vertical carrier and bunker reservoir as system component.

Thanks to chained Z conveyor and chained bunker conveyor, highly loaded trailers and trucks can feed the machine. Vertical carrier is made of Z conveyor's movement speed, an adjustable pair of chains and brace plates between chains.



## ■ DOSING SYSTEM

All parts of the machine in contact with the packaged product are chrome plated. This function has been added to the machine in case of damage to machine parts during the packaging process.



## ■ ADJUSTABLE PACKET WEIGHT

Perpetual® offers adjustable packet weight capacity with the press system. You may set a weight option between 25 kg up to 50 kg on the digital monitor on the machine. You will get flawless packets with a possibility of a error only 0.2%.



## ■ BUNKER MIXING AUGER

With PERPETUAL® our aim was to provide flawless packets. There has always been the possibility of materials getting stuck together and making it to the packets yielding bad results in consistent packing. Until now! Thanks to marvellously designed bunker mixing auger, we prevent this kind of error from happening.

# PACKING MACHINES

While developing the Perpetual®, we chose to use a fully automatic, low-cost, economical and semi-automatic machine for users. The more you win, the more you earn!



<b>PERPETUAL</b> <small>CHILIT FOLIOSE</small>	PERPETUAL STD		PERPETUAL STD II		PERPETUAL GO		PERPETUAL GO II		PERPETUAL ULTIMATE	PERPETUAL ULTIMATE II
Chassis Option	MACHINE	SYSTEM	3500 mm	SYSTEM	MACHINE	SYSTEM	MACHINE	SYSTEM	MACHINE	MACHINE
Length-A	SYSTEM	4000 mm	3150 mm	10500 mm	4440 mm	3370 mm	4700 mm	10300 mm	7800 mm	9000 mm
Height-B	3500 mm	3400 mm	3400 mm	3400 mm	3470 mm	3720 mm	3440 mm	3690 mm	2800 mm	2890 mm
Width-C	4000 mm	8500 mm	3400 mm	3400 mm	1650 mm	8900 mm	2420 mm	2950 mm	2200 mm	2680 mm
Wheel Trail Width -D	3150 mm				1450 mm		2130 mm		1920mm	2120 mm
Packing Capacity	180-240 pack/hour		360-480 pack/hour		180-240 pack/hour		360-480 pack/hour		160-220 pack/hour	
Maize Silage	6 ton(s)/hour		12 ton(s)/hour		6 ton(s)/hour		12 ton(s)/hour		5 ton(s)/hour	
Beet Pulp	9 ton(s)/hour		18 ton(s)/hour		9 ton(s)/hour		18 ton(s)/hour		7.5 ton(s)/hour	
Weight	20-60 kg		20-60 kg		20-60 kg		20-60 kg		20-60 kg	
Grammage Tolerance	200 - 250 gr		200 - 250 gr		200 - 250 gr		200 - 250 gr		200 - 250 gr	
Empty Weight	1100 kg		2300 kg		1800 kg		2450 kg		3150 kg	
Power Requirement (KW)	9 KW		18 KW		9 KW		18 KW		9 KW	
Power Requirement (A)	18 A		36 A		18 A		36 A		18 A	
Power	3 PHASE		3 PHASE		3 PHASE		3 PHASE		3 PHASE	
Vacuum Power	0,75 KW		1,5 KW		0,75 KW		1,5 KW		0,75 KW	
Wheel Sizes	n/a		n/a		185 R 14C		225 / 70 R 15C		10.0/75 15,3	
Compressor Capacity	300 L		500 L		300 L		500 L		300 L	
Air Pressure Requirement	6-8 BAR		6-8 BAR		6-8 BAR		6-8 BAR		6-8 BAR	
Packet Sealing	Hot Sealing		Hot Sealing		Hot Sealing		Hot Sealing		Hot Sealing	
Load Cell Number	3 pcs		6 pcs		3 pcs		6 pcs		3 pcs	
Station Number	1 pcs		2 pcs		1 pcs		2 pcs		1 pcs	
Dosing Reservoir	Standard		Standard		Standard		Standard		Standard	
Intake System	Mixer + Conveyor		Mixer + Conveyor		Mixer		Mixer		Bunker	
Option -1-	n/a		n/a		Dosing in Pack		Dosing in Pack		Mixer	
Option -2-	n/a		n/a		n/a		n/a		Dosing Reservoir	
Ladder	Standard		Standard		Standard		Standard		Standard	

WEIGHT VALUES IN THE TABLE ARE FOR BASE MACHINE. MACHINE WEIGHTS MAY VARY ACCORDING TO THE OPTIONS.

ÇELİKEL TARIM LTD. ŞTİ. KEEPS CHANGING OF TECHNICAL VALUE RIGHTS RESERVED.